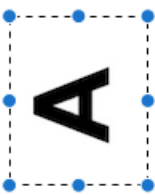




How to use Mac OS Preview to Edit an Image File:

How to select part of an image and rotate it.

- 1) Select and Copy the part of the image you want (page 2 & 3)
- 2) Create a New File (page 4 & 5)
- 3) Rotate the New File (pages 4 to 6)
- 4) Paste the rotated image back into the original image (page 7 to 9)

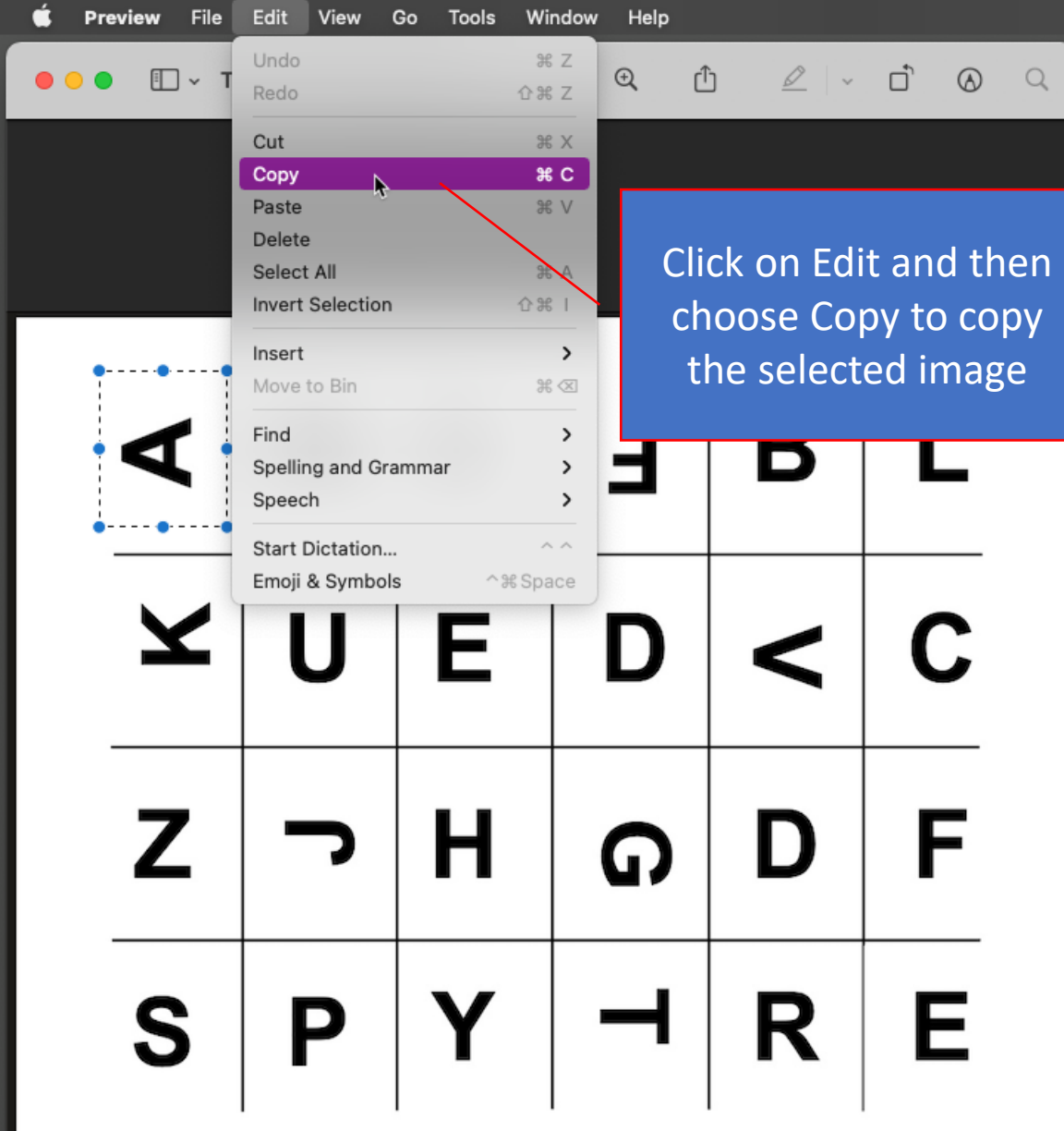


2) Click and hold the right mouse button, then drag it to create a rectangle around the are you want to rotate

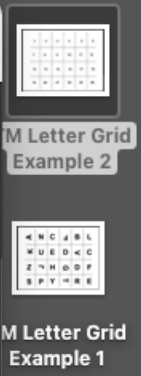
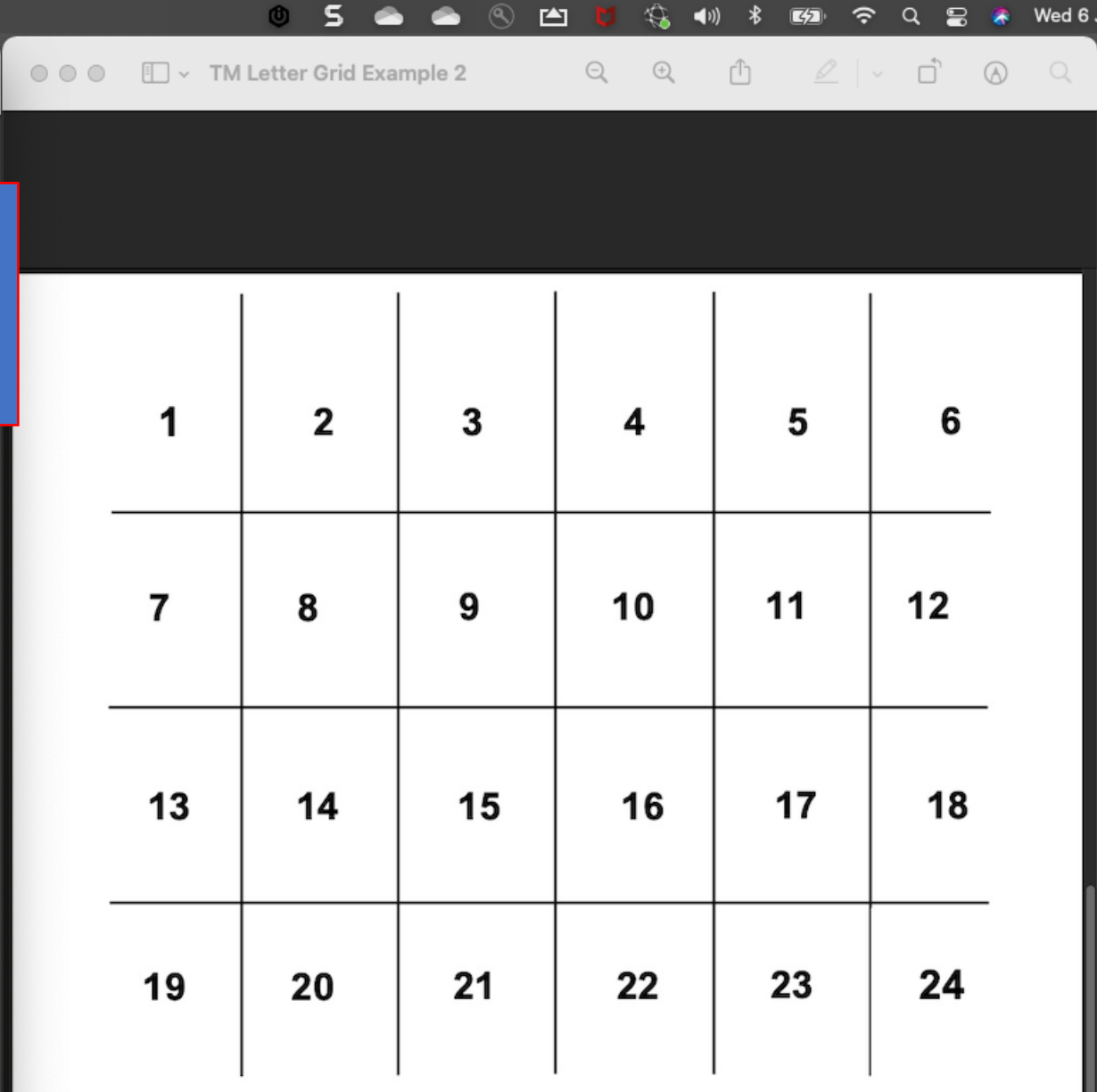
A	N				L
K	U	E	D	<	C
Z	7	H	G	D	F
S	P	Y	T	R	E

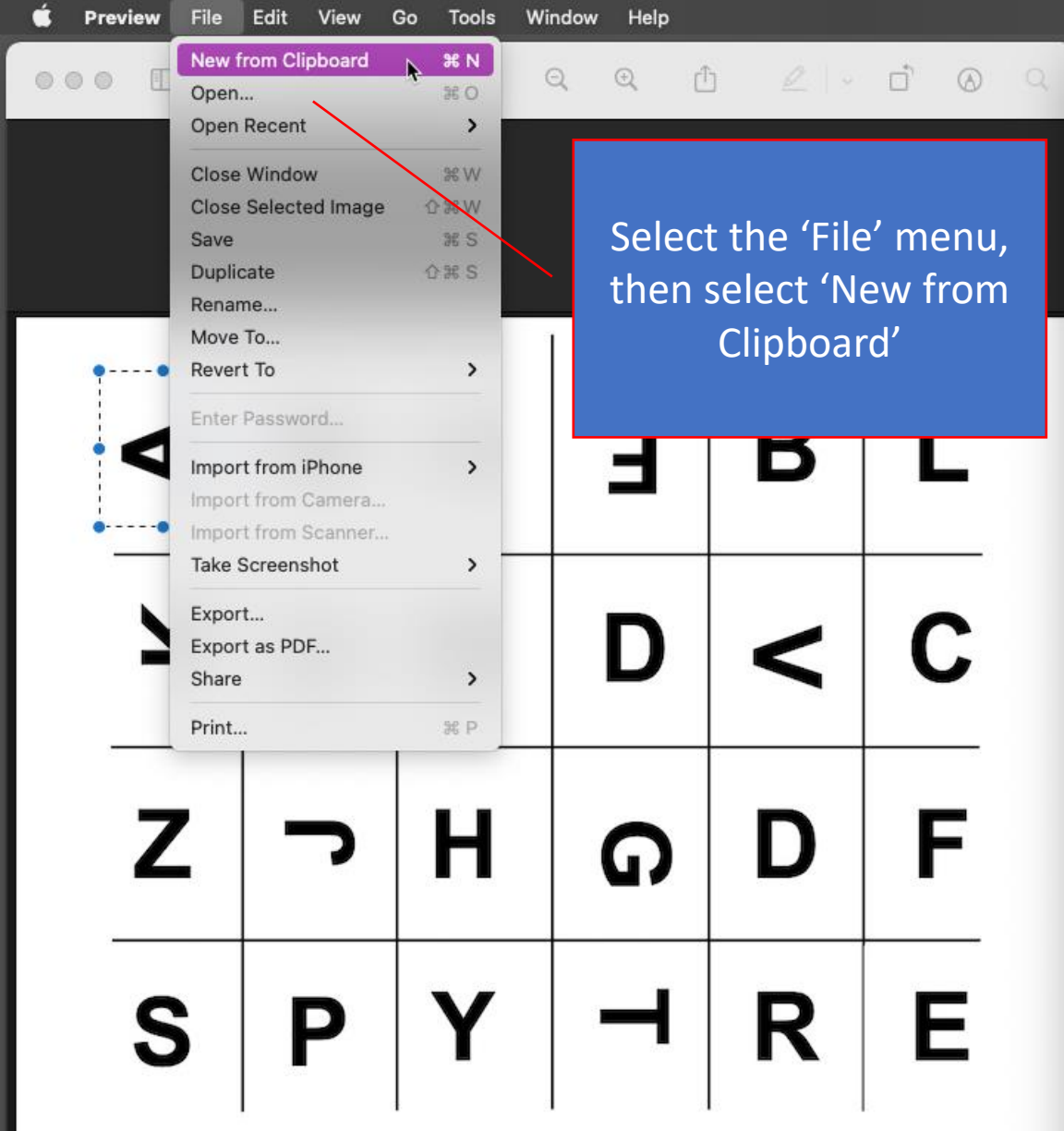
1	2				
7	8				
13	14	15	16	17	18
19	20	21	22	23	24

1) Start by opening both image files side by side
OR
2) Use the single image Puzzle Board and Puzzle Pieces
NOTE: Most TeamWorx events have these two images put together as a single image.

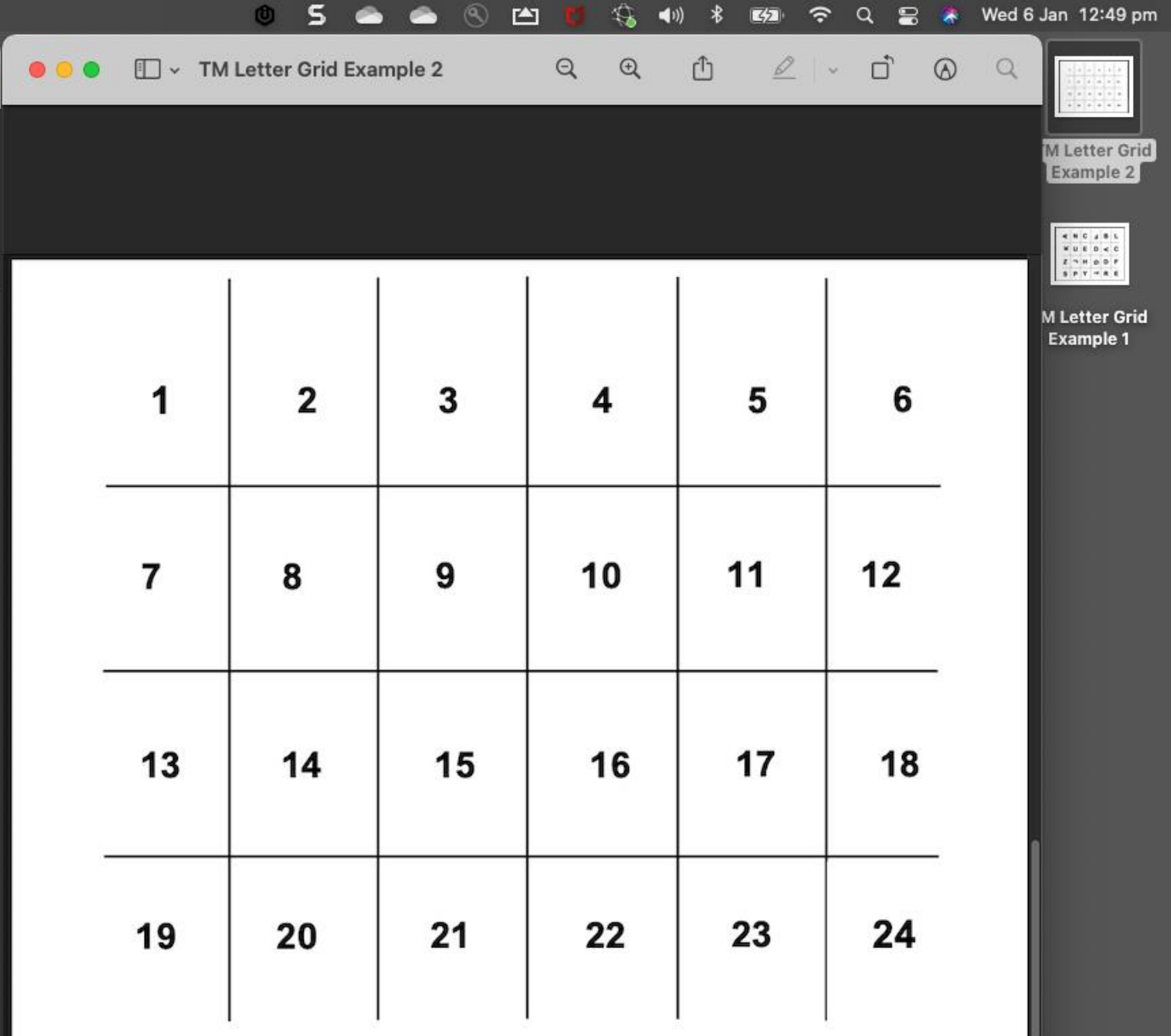


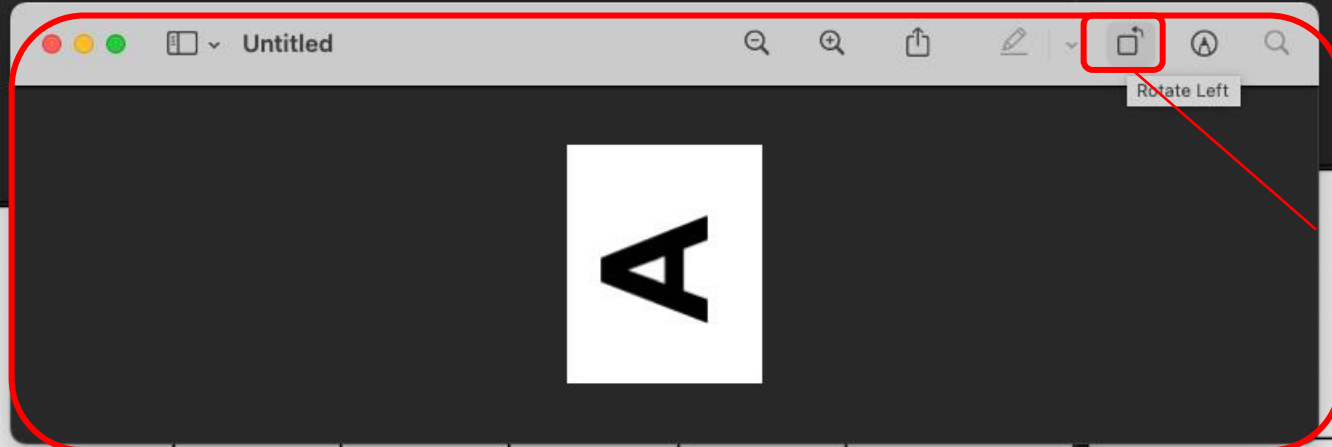
Click on Edit and then choose Copy to copy the selected image





Select the 'File' menu,
then select 'New from
Clipboard'

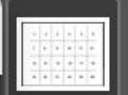




'New from Clipboard' will create a new window like this with the image inside, ready to be rotated. Use this 'Rotate Left' button to rotate the image

K	U	E	D	^	C
Z	7	H	G	D	F
S	P	Y	T	R	E

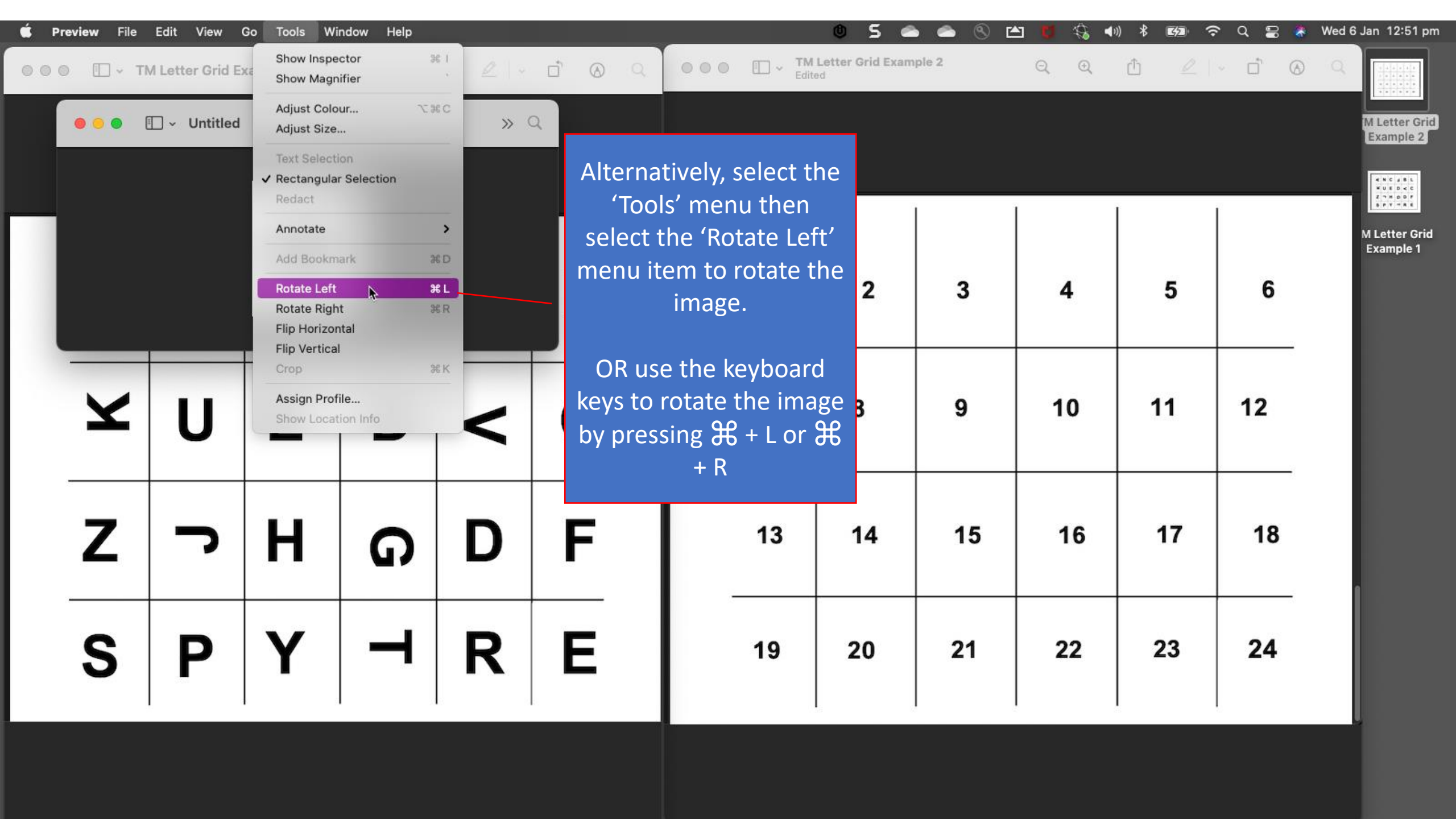
				5	6
7	8	9	10	11	12
13	14	15	16	17	18
19	20	21	22	23	24



M Letter Grid Example 2



M Letter Grid Example 1



- Show Inspector ⌘ I
- Show Magnifier
- Adjust Colour... ⌘ ⌘ C
- Adjust Size...
- Text Selection
- ✓ Rectangular Selection
- Redact
- Annotate >
- Add Bookmark ⌘ D
- Rotate Left ⌘ L**
- Rotate Right ⌘ R
- Flip Horizontal
- Flip Vertical
- Crop ⌘ K
- Assign Profile...
- Show Location Info

Alternatively, select the 'Tools' menu then select the 'Rotate Left' menu item to rotate the image.

OR use the keyboard keys to rotate the image by pressing ⌘ + L or ⌘ + R

K	U				
Z	7	H	G	D	F
S	P	Y	T	R	E

2	3	4	5	6	
8	9	10	11	12	
13	14	15	16	17	18
19	20	21	22	23	24

M Letter Grid Example 2

M Letter Grid Example 1

- Undo Rotate Left ⌘ Z
- Redo ⌘⇧ Z
- Cut ⌘ X
- Copy ⌘ C**
- Paste ⌘ V
- Delete
- Select All ⌘ A
- Invert Selection ⌘⇧ I
- Insert >
- Move to Bin ⌘⇧⌘
- Find >
- Spelling and Grammar >
- Speech >
- Start Dictation... ⌘⇧⌘
- Emoji & Symbols ⌘⇧ Space

Select the 'Edit' menu, then select 'Copy' to copy the rotated image



K	U	E	D	<	C
Z	↷	H	G	D	F
S	P	Y	└	R	E

	2	3	4	5	6
7	8	9	10	11	12
13	14	15	16	17	18
19	20	21	22	23	24



- Undo Remove Image ⌘ Z
- Redo Paste Image ⌘⇧ Z
- Cut ⌘ X
- Copy ⌘ C
- Paste ⌘ V**
- Delete
- Select All ⌘ A
- Invert Selection ⌘⇧ I
- Insert >
- Move to Bin ⌘⇧ ⌫
- Find >
- Spelling and Grammar >
- Speech >
- Start Dictation... ⌘⇧ ⌘
- Emoji & Symbols ⌘⇧ Space

Click on the Puzzle Board Image to select it, then select 'Edit' and then 'Paste' to paste the rotated image into the puzzle board.

K	U	E	D	<	C
Z	↷	H	᠒	D	F
S	P	Y	└	R	E

	2	3	4	5	6
7	8	9	10	11	12
13	14	15	16	17	18
19	20	21	22	23	24



M Letter Grid Example 2



M Letter Grid Example 1



K	U	E	D	<	C
Z	7	H	G	D	F
S	P	Y	T	R	E

	A	2	3	4	5	6
7	8	9				
13	14	15				
19	20	21	22	23	24	

Click and drag the
pasted image to the
desired location



M Letter Grid Example 2



M Letter Grid Example 1